



Millsmead Way, Loughton, IG10

BUTLER & STAG





**Enviably positioned, this delightful four bedroom semi detached family home is located in a popular location of Loughton within good school catchment areas.**



## Freehold

- Semi-Detached Family Home
- Large Living/Dining Area
- Downstairs Shower Room/Utility Room
- Potential For Loft Conversion (sttp)
- Four Bedrooms/One Bathroom
- Kitchen/Breakfast Room
- South West Facing Garden

This lovely example of a family home is arranged over two floors. Accommodation comprises of the entrance porch, a large living room, separate dining area with patio doors onto the garden and a fully fitted kitchen/breakfast room.

On the first floor there are three double bedrooms and a single bedroom, as well as a family bathroom.

Externally, there is a laid to lawn south west facing rear garden which extends close to 76 ft, there is also a paved driveway which allows access for off street parking for two/three vehicles.

Loughton is known for its scenic views and being on the border of Epping Forest. It has excellent transport links into London from Loughton underground station, with the M11 and M25 being close by. With its highly regarded state and private schools within easy reach, its stylish, popular boutiques and abundance of eateries/bars makes it a desirable location.



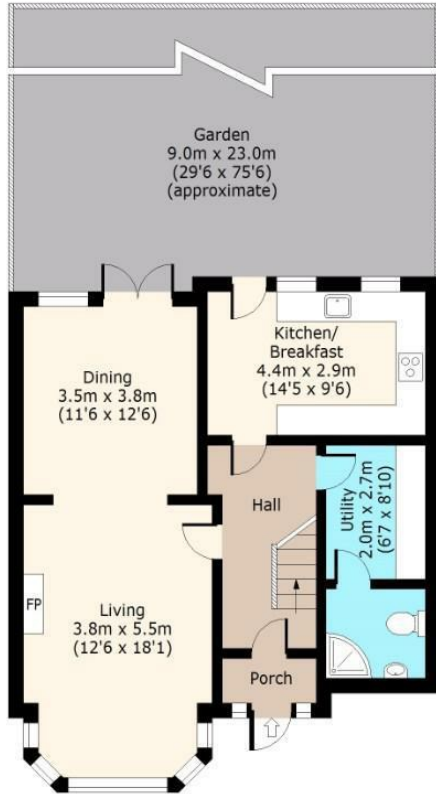






Millsmead Way,

**Ground Floor**  
Approx. 70 Sq. meters (754 Sq. feet)



**First Floor**  
Approx. 62 Sq. meters (667 Sq. feet)



Total area: approx. 132 Sq. meters (1421 Sq. feet)  
For illustration purposes only - not to scale  
[www.lpa.plus.com](http://www.lpa.plus.com)



**BUTLER & STAG**

☎ 01992 667666

🏠 4 Forest Drive, Theydon Bois, Essex, CM16 7EY

✉ [theydon@butlerandstag.com](mailto:theydon@butlerandstag.com)

[www.butlerandstag.uk](http://www.butlerandstag.uk)

IMPORTANT NOTICE - These particulars have been prepared in good faith and they are not intended to constitute part of an offer or contract. We have not performed a structural survey on this property and the services, appliances and specific fittings have not been tested. All photographs, measurements, floor plans and distances referred to are given as a guide and should not be relied upon.